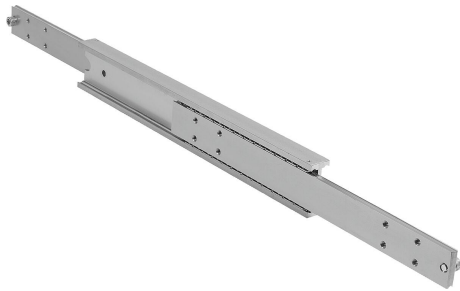


## Telescopic slides, steel compact, full extension, load capacity up to 480

kg

Item description/product images



### Description

**Material:**

Rails steel.

Ball cages steel.

Ball stainless steel.

**Version:**

Slides electro zinc-plated.

Ball cages, electro zinc-plated.

Balls hardened.

**Note for ordering:**

Sold individually.

**Note:**

On telescopic slides with full extension, the travel is equal to the installed length, which ensures greater comfort and accessibility. The telescopic slides achieve the specified load capacities when side-mounted.

The dynamic load capacity of the telescopic slides indicates the maximum load rating of a vertically mounted slide pair when the entire extension length is used.

The load capacity is ca. 70% lower by horizontal mounting.

Suitable for a slide spacing up to 1,000 mm.

**Technical data:**

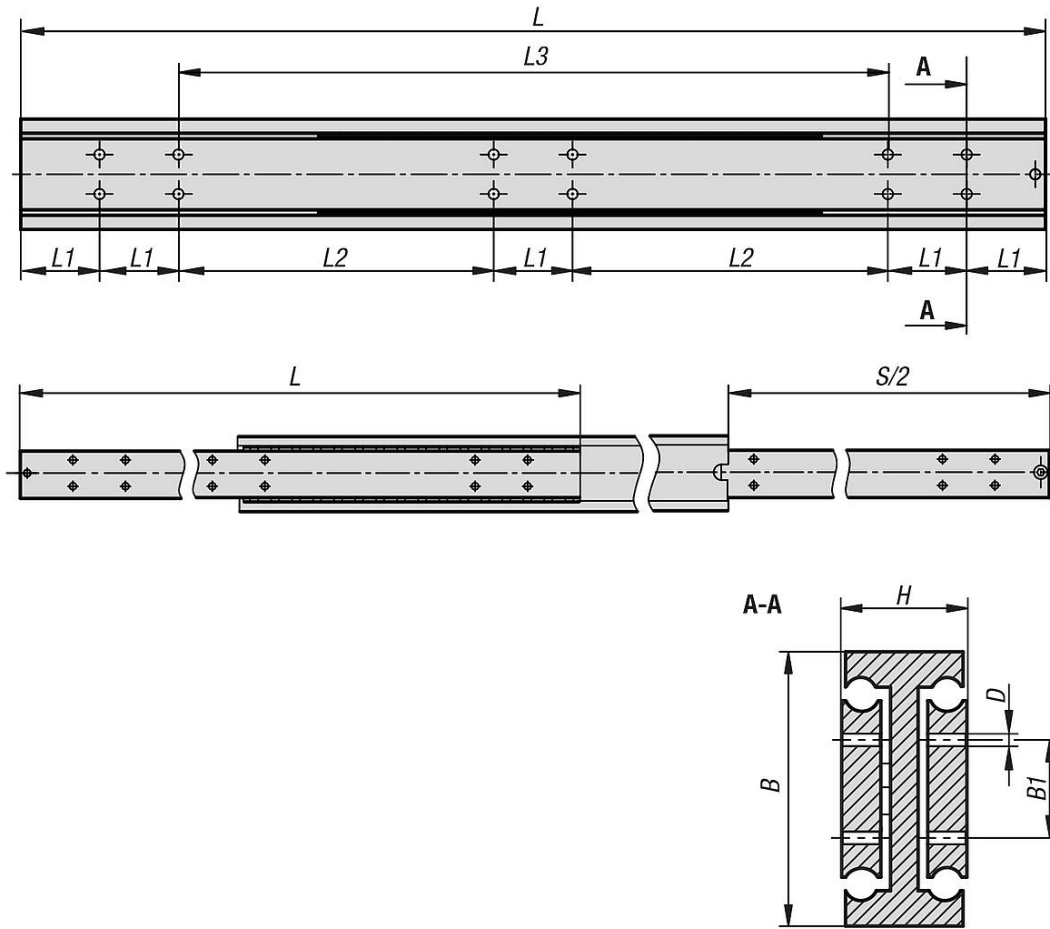
Traversing speed: 0.5 m/s.

**Temperature range:**

-20 °C - +180 °C.

**Telescopic slides, steel compact, full extension, load capacity up to 480**

**kg**  
Drawings



**Overview of items**

**Telescopic slides, steel, compact, full extension, load capacity up to 480 kg**

Order No.	B	B1	D	H	L	L1	L2	L3	No. of holes	Travel S	Loading per pair kg
K2074.0400	70	25	M8	32	400	50	-	200	8	400	440
K2074.0450	70	25	M8	32	450	50	-	250	8	450	450
K2074.0500	70	25	M8	32	500	50	-	300	8	500	460
K2074.0550	70	25	M8	32	550	50	-	350	8	550	470
K2074.0600	70	25	M8	32	600	50	-	400	8	600	480
K2074.0650	70	25	M8	32	650	50	200	-	12	650	460
K2074.0700	70	25	M8	32	700	50	225	-	12	700	440
K2074.0750	70	25	M8	32	750	50	250	-	12	750	420
K2074.0800	70	25	M8	32	800	50	275	-	12	800	400
K2074.0850	70	25	M8	32	850	50	300	-	12	850	380
K2074.0900	70	25	M8	32	900	50	325	-	12	900	360
K2074.0950	70	25	M8	32	950	50	350	-	12	950	340
K2074.1000	70	25	M8	32	1000	50	375	-	12	1000	320
K2074.1050	70	25	M8	32	1050	50	400	-	12	1050	310
K2074.1100	70	25	M8	32	1100	50	425	-	12	1100	300
K2074.1150	70	25	M8	32	1150	50	450	-	12	1150	290
K2074.1200	70	25	M8	32	1200	50	475	-	12	1200	280
K2074.1250	70	25	M8	32	1250	50	500	-	12	1250	270
K2074.1300	70	25	M8	32	1300	50	525	-	12	1300	260
K2074.1400	70	25	M8	32	1400	50	575	-	12	1400	240

**Telescopic slides, steel compact, full extension, load capacity up to 480****kg****Overview of items**

Order No.	B	B1	D	H	L	L1	L2	L3	No. of holes	Travel S	Loading per pair kg
<b>K2074.1500</b>	70	25	M8	32	1500	50	625	-	12	1500	220