

Locking plate steel DIN 462

Item description/product images



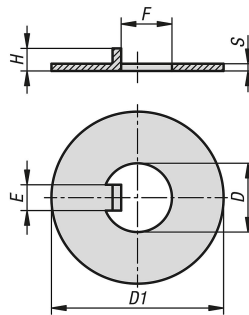
Description

Material:
Steel.

Version:
Bright.

Note:
DIN 462 locking plates are used to secure the DIN 1804 slotted round nuts. To use the locking plates, a keyway must first be cut into the screw thread.

Drawings



Overview of items

Locking plate steel DIN 462

Order No.	D	D1	E	F	H	S	Suitable for
K2062.010	10	25	4	7,4	3	0,8	K1917.110/K1917.210
K2062.014	14	30	5	11,4	3	0,8	K1917.112/K1917.212
K2062.016	16	32	5	13,5	3	1	K1917.114/K1917.214
K2062.018	18	34	6	15,4	4	1	K1917.116/K1917.216
K2062.020	20	36	6	17,5	4	1	K1917.118/K1917.218
K2062.022	22	40	6	19,5	4	1	K1917.120/K1917.220
K2062.024	24	42	6	21,6	4	1	K1917.122/K1917.222
K2062.028	28	50	7	25,5	5	1	K1917.124/K1917.224
K2062.030	30	50	7	27,5	5	1,2	K1917.126/K1917.226
K2062.032	32	52	7	29,6	5	1,2	K1917.128/K1917.228
K2062.035	35	55	7	32,6	5	1,2	K1917.130/K1917.230
K2062.038	38	58	8	36,3	5	1,2	K1917.132/K1917.232
K2062.040	40	62	8	37,3	5	1,2	K1917.135/K1917.235
K2062.042	42	62	8	39,3	5	1,2	K1917.138/K1917.238