

Cam clamps steel, Form B

Item description/product images



Description

Material:
Carbon steel.

Version:
Black oxidised.

Note:
Dimension A refers to the distance from the workpiece to screw centre (cam screw).

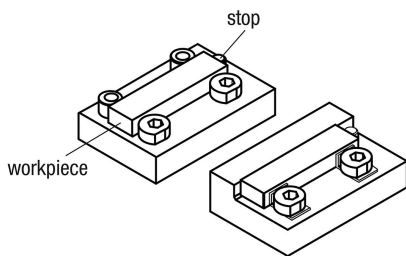
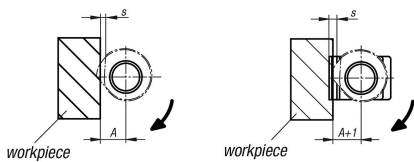
Form B with clamp plate is recommended to minimise scratches on the workpiece.

Advantages:

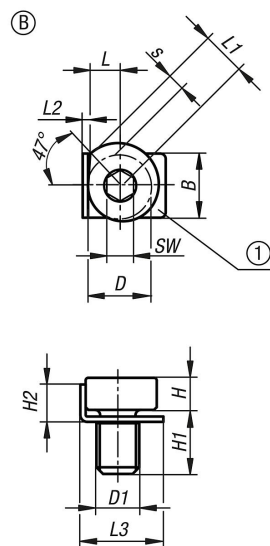
- Compact design
- Quick and easy clamping of components

Accessory:
Clamping plate K2050.

Drawing reference:
(1) clamping plate



Drawings



Cam clamps steel, Form B

Overview of items

Order No.	Form	Form definition	A	B	D	D1	H	H1	H2	L	L1	L2	L3	Travel S	SW	Clamping force kN	Tightening torque max. Nm
K2048.061	B	-	5,9	10	10	M6	5	9	6	5	6,8	1	13	1,8	4	2,2	7,4
K2048.081	B	-	7,1	12	12	M8	6	12	7	6	8,2	1	15,5	2,2	5	4,7	18
K2048.101	B	-	8,3	14	14	M10	7	15	8	7	9,5	1	18	2,5	6	7,9	35
K2048.121	B	-	9,5	16	16	M12	8	18	9	8	10,9	1	20	2,9	8	14	60