

Prism

Item description/product images



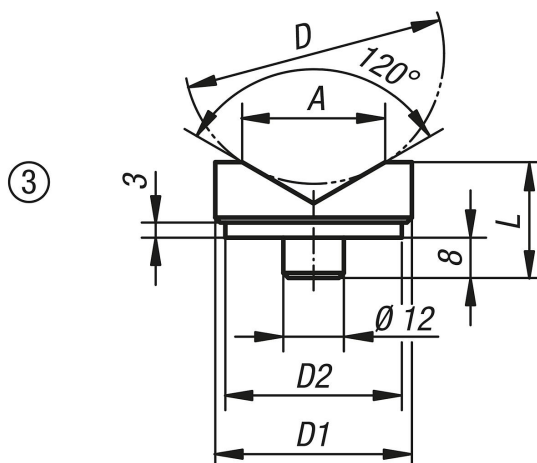
Description

Material:
Carbon steel.

Version:
Tempered and black oxidised.

Note:
Can be used with
K1941
K1943
K1944
K1233
K1945
K1946.010

Drawings



Overview of items

Order No.	Item	D	D min.	D1	D2	L	A
K1961.02	Prism Insert	50	10	45	42	23	32
K1961.021	Prism Insert	100	22	65	62	38	56