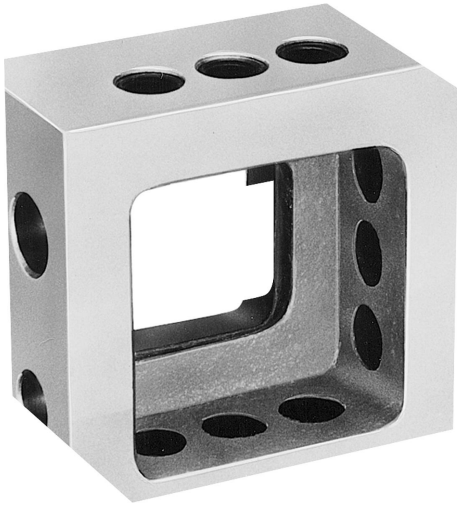


Mini tooling blocks

Item description/product images



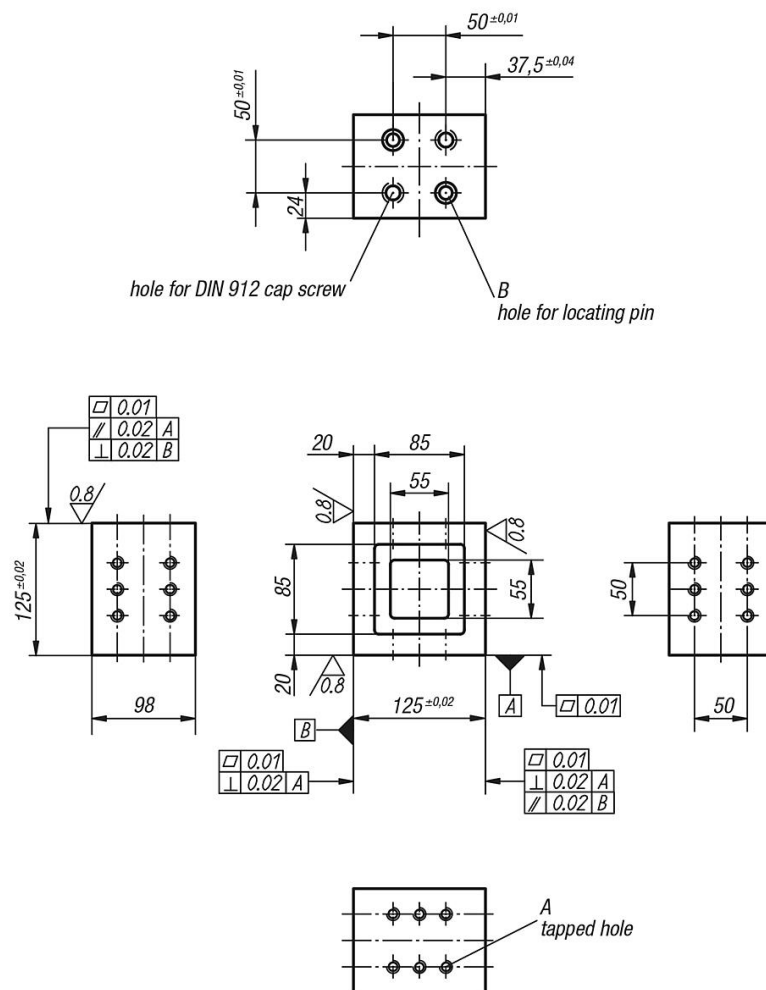
Description

Material:
GJL 300.

Version:
Support and mounting surfaces ground

Note:
Mini tooling blocks are positioned using 2 locating pins K0817 and secured with 2 DIN 912 cap screws. They can be used as stops or support and add-on elements.

Drawings



Overview of items

Mini tooling blocks

Mini tooling blocks

Overview of items

Order No.	A	B	C hole for DIN 912 cap screw	weight kg
K0809.09516125	M16	16 F7	M16	6,081