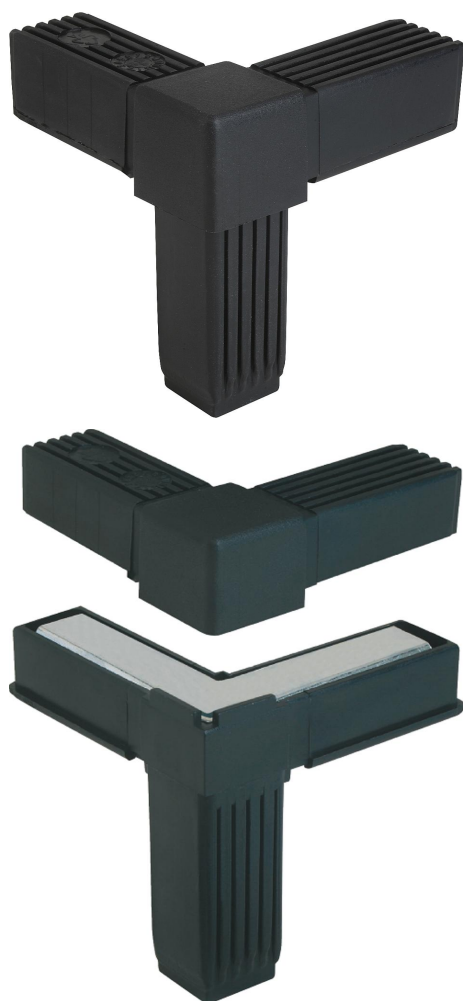


Square tube connectors three-way

Item description/product images



Description

Material, version:

Polyamide PA, black.

Core electro zinc-plated steel.

Note:

No screws required. The tube connectors are simply pushed into the appropriate square tubing. They can be dismantled and reused repeatedly.

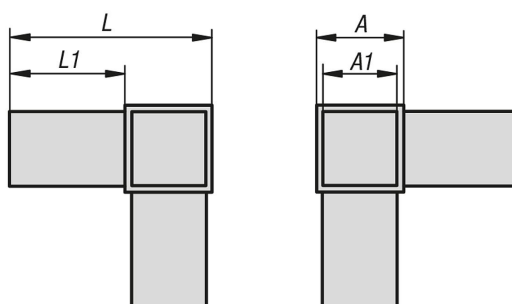
By Item K0619.1201512 the cap closes central.

Accessory:

- Square tubes K0627

- Finned square tubes K0628

Drawings



Overview of items

Square tube connector, three-way

Order No.	A	A1	L	L1	Suitable for square tubes
K0619.1201512	20	17	56	36	20 x 20 x 1,5
K0619.1251512	25	22	73	48	25 x 25 x 1,5
K0619.1302012	30	26	77	47	30 x 30 x 2

